

670 XD



GEOLINER® 670 XD FULLY FEATURED, HIGHLY ACCURATE WHEEL ALIGNMENT SYSTEMS

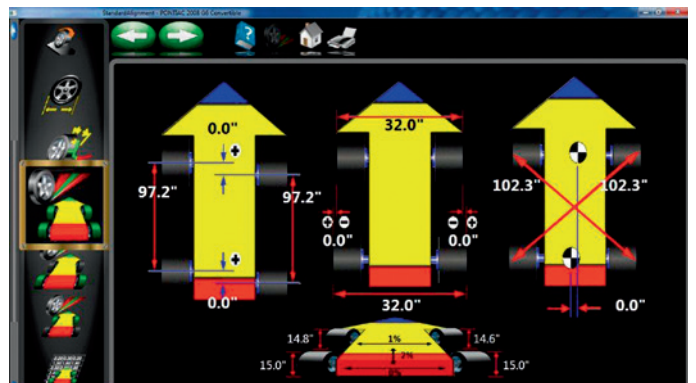
VERSATILE, ACCURATE HARDWARE

- High-resolution cameras produce accurate, live alignment readings and diagnostic data
- Passive front and rear XD targets improve durability with no electronics to damage
- Advanced XD targets and AC400 clamps are lightweight, durable and impact resistant

ADVANCED DIMENSIONING* WITH THE SOFTWARE PRO42 GOLD

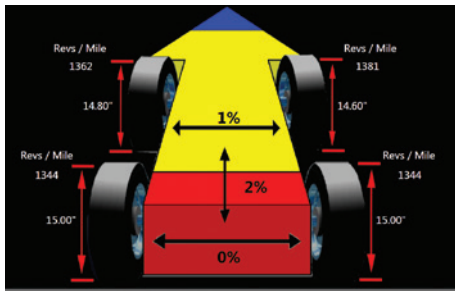
- Measurement of vehicle dimensions such as track width and wheel base as well as cross-diagonal measurement identify frame or structural damage.
- The wheels-off mode facilitates access to and adjustment of components otherwise difficult to reach.
- Rolling Radius* identifies mismatched tyre sizes – a potential cause of vehicle pulling and driver complaints.

* Patented and / or patent-pending features



PROFESSIONAL SOLUTION FOR CUSTOMER SATISFACTION

Patented imaging technology provides accurate and real-time measurements that improve productivity. User-friendly features such as EZ-TOE*, VODI* and an extensive vehicle specification database deliver customer satisfaction, ease of use and accuracy.



AC400 clamps with XD-Targets

Weighing in at 3.13 kg (6.9 lbs) and measuring only 152 x 203 mm (6" x 8") in the front and rear, the AC400/XD package is the smallest and lightest we've ever made

Ride height* measurement

Measure ride height and obtain proper alignment specs for those vehicles requiring it

EZ-Toe*

Turn the front wheels and access difficult adjustment points while still displaying centred toe readings

User-friendly interface

Use available step-by-step instructions as a guide for completing even the most complex tasks

Manufacturer specs

Extensive OEM specs allow quick and accurate vehicle selection

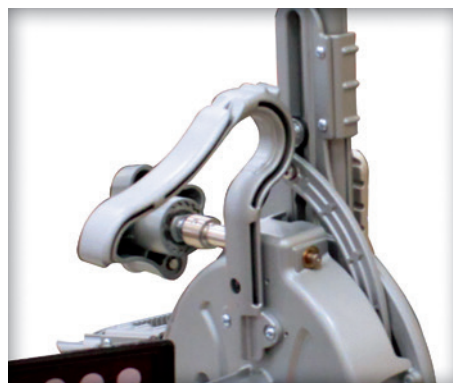
VODI™

Vehicle Orientation Directional Indicator* – guides the technician through the measurement process

Help videos

View detailed videos of how to make needed adjustments to complete even the most complex tasks

AVAILABLE WITH THE HOFMANN® AC400 NON-CONTACT ALIGNMENT WHEEL CLAMPS



Secure clamping without touching the rim

- Only the tyre is contacted
- Clutch limited clamping force ensures accurate and repeatable results
- Durable and lightweight magnesium construction
- Alternatively, AC100 universal wheel clamps made of cast aluminum, with no limitation on tyre diameter

AC400: Fast and easy to use

- Clamping is accomplished with a single fast-action adjustment knob
- No accessories needed to accommodate the full range of tyre sizes
- Large, comfortable handle allows ergonomic use
- XD targets are lighter and take up less space than previous designs

* Patented and / or patent-pending features

670 XD



geoliner®

WHEEL ALIGNMENT SYSTEMS

SPECIFICATIONS

Track width	121.9 cm – 243.8 cm (48" – 96")
Wheel base	200.7 cm – 457.2 cm (79" – 180")
Shipping weights	227 kg
Power requirements	230 V 1 ph 50–60 Hz

AC400 Specifications

Tyre diameter	48.3 cm – 99.1 cm (19" – 39")
Weight	3.13 kg
Clamping force	164.6 N
Construction	Cast magnesium

AC100 Specifications

Rim clamping range	11" – 22"
Weight	4.9 to 5.2 kg (10.9 to 11.5 lbs)
Construction	Cast aluminium

Standard Accessories

Wheel clamps & targets
Steering wheel holder
Brake pedal depressor
Colour printer
Two wheel chocks

* Standard with geoliner® 670 XD AC100

** Standard with geoliner® 670 XD AC400

OPTIONAL ACCESSORIES

AC100* universal wheel clamp kit
EAK0305J83A

AC400** wheel clamp kit
EAK0320J35A

Drive-on camera aid
EAK0289J91A

Mobility kit
EAK0320J78A

Hub adaptor kit for wheels-off alignment (AC100/AC400)
EAK0222J83B

AC100 universal wheel clamp extension kit
EAK0268J62A

AC400 dual wheel adaptor kit
EAK0305J50A

Dual tall support kit
EAK0289J80A

Centre tall support kit
EAK0289J82A

Dual short support kit
EAK0289J81A

Centre short support kit
EAK0289J83A

Tilt camera beam
EAK0279G19A

EMEA-JA

Snap-on Equipment s.r.l. - Via Prov. Carpi, 33 - 42015 Correggio (RE)
Phone: +39 0522 733-411 - Fax: +39 0522 733-479

Austria

Snap-on Equipment Austria GmbH - Hauptstrasse 24/Top 14 - A-2880 St. Corona/Wechsel (RE)
Phone: +43 1 865 97 84 - Fax: +43 1 865 97 84 29

France

Snap-on Equipment France - ZA du Vert Galant - 15, rue de la Guivernone BP 97175
Saint-Ouen-l'Aumône - 95056 Cergy-Pontoise CEDEX
Phone: +33 134 48 58-78 - Fax: +33 134 48 58-70

Germany

Snap-on Equipment GmbH - Konrad-Zuse-Straße 1 - 84579 Unterneukirchen
Phone: +49 8634 622-0 - Fax: +49 8634 5501

Italy

Snap-on Equipment s.r.l. - Via Prov. Carpi, 33 - 42015 Correggio (RE)
Phone: +39 0522 733-411 - Fax: +39 0522 733-410

United Kingdom

Snap-on Equipment Ltd. - Unit 17 Denney Road, King's Lynn - Norfolk PE30 4HG
Phone: +44 118 929-6811 - Fax: +44 118 966-4369