

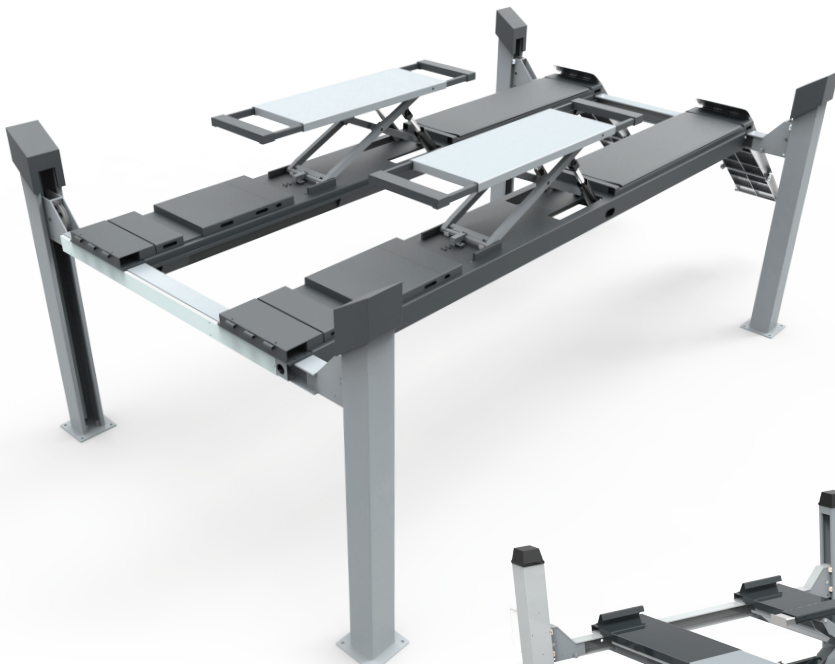
CE



GALTA

GREY LINE

4 POST LIFTS



GT-FP-LT



GT-FP

VEHICLE LIFTS



ITALIAN PREMIUM QUALITY

GT - FP 3.5 - 4.5 - 5.5



Four post electrohydraulic lift ideal for 3D technology wheel alignment - 2 independent ropes - pneumatic release with safety lock - with anti-knock valve - standard rolling jack lane - standard engine power 2,2KW - 400V/3PH /50 HZ - on request: 2,2 KW - 220 V/1PH/50HZ - Pneumatic connection for safe release required 6/8 bar

Sollevatore elettroidraulico 4 colonne ideale per assetto ruote a tecnologia 3D - 2 funi indipendenti - valvola paracadute - corsia standard rolling jack - potenza motore 2.2/3.0kw - 400V/3PH/50Hz - a richiesta 2,2 KW - 220V/1PH/50HZ - richiesta connessione aria per lo sgancio sicure 4/8bar

MODEL	PLATFORM (mm)	CAPACITY	DISTANCE BETWEEN COLUMN	LIFTING HIGHT	DESCRIPTION
GT - FPA 3.5	4260 x 490	3.5 T	2564	220 - 1820	Front recess 685mm - for wheel alignment - sliding plates 1400mm - anti knock valve Incavo anteriore 685mm - piano oscillante 1400mm - valvola paracadute
GT - FPF 3.5	4260 x 490	3.5 T	2564	170 - 1770	Flat platform - anti knock valve Pedana piana a basso profilo - valvola paracadute
GT - FPA 4.5	5190 x 490	4.5 T	2742	246 - 1896	Front recess 1065mm - sliding plates 1400mm - anti knock valve - for wheel alignment Incavo anteriore 1065mm - piano oscillante 1400mm - valvola paracadute
GT - FPF 4.5	5190 x 490	4.5 T	2742	196 - 1846	Flat platform - anti knock valve Pedana piana - valvola paracadute
GT - FPA 5.5	5190 x 490	5.5 T	2742	246 - 1896	Front recess 1065mm - sliding plates 1400mm - anti knock valve - for wheel alignment Incavo anteriore 1065mm - piano oscillante 1400mm - valvola paracadute
GT - FPF 5.5	5190 x 490	5.5 T	2742	196 - 1846	Flat platform - anti knock valve Pedana piana - valvola paracadute

On request, all the platforms of the GT-FPA models can be provided with turning plates, and rolling jack.
All our product are supplied with sandblasting. STANDARD COLOURS: GREY RAL 7016 - GREY RAL 7040

A richiesta tutte le pedane dei modelli GT-FPA possono ospitare piatti rotanti e rolling jack.
Su tutti i ponti viene applicato il trattamento di sabbiatura. COLORI STANDARD: GRIGIO RAL 7016 - GRIGIO RAL 7040

OPTIONAL

• Emergency Manual Descent Pump
Pompa di emergenza manuale

• Kit LED lamp
Kit lampade a LED

• Expansion bolt set (16pcs)
Tasselli ad espansione (16pcs)

• Turning plates set for alignment + covers
Piatti rotanti per allineamento + coperture

• Complete covers front recess
Coperture complete per incavo anteriore

• Rolling jack 2T manual
Rolling jack 2T manuale

• Rolling jack 2T pneumatic
Rolling jack 2T pneumatico

• Rolling jack 3T pneumatic
Rolling jack 3T pneumatico

NOTE



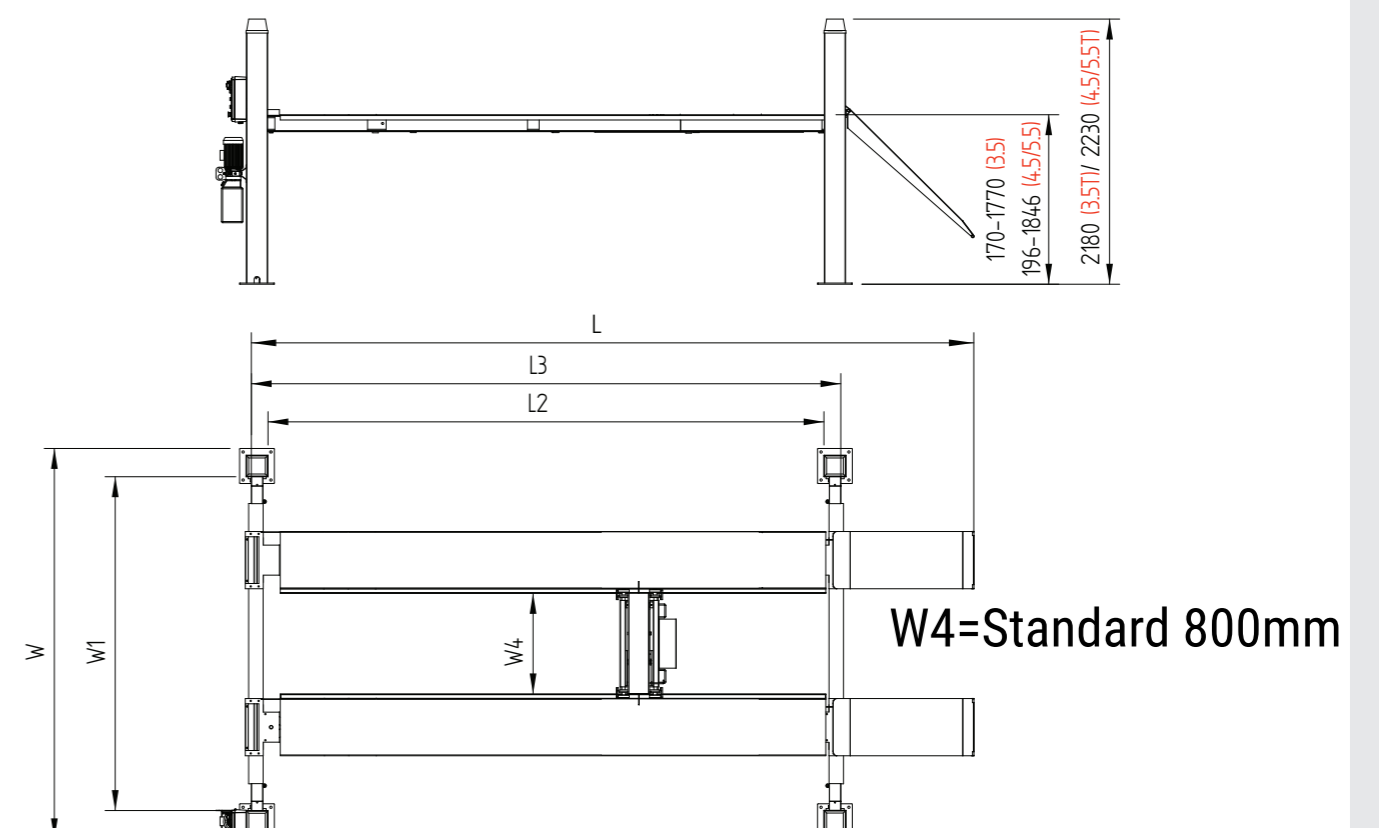
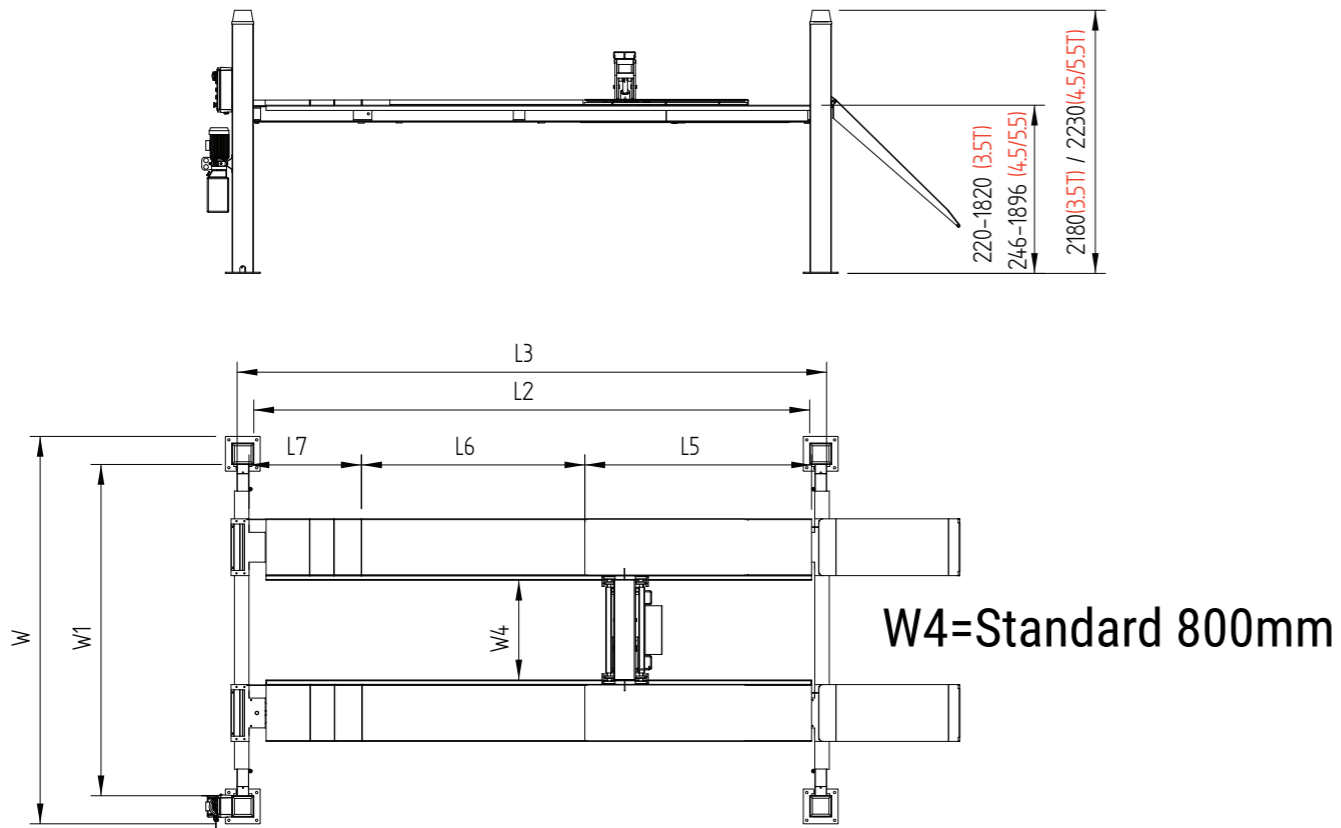
3.500 Kg

4.500 Kg

5.500 Kg

GT - FPA 3.5/4.5/5.5

GT - FPF 3.5/4.5/5.5

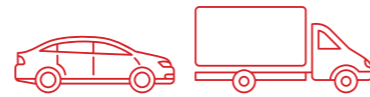


CODE	L	L1	L2	L3	L4	L5	L6	L7	W	W1	W2	W3	W4	H	H1	H2
GT - FPA 3.5	5206	4372	3812	4260	280	1400	1677	685	3124	2564	490	280	800 - 1100	2180	1820	220
GT - FPA 4.5	6288	5303	4703	5190	300	1400	1700	1065	3342	2860	490	300	800 - 1100	2230	1896	246
GT - FPA 5.5	6288	5303	4703	5190	300	1400	1700	1065	3342	2860	490	300	800 - 1100	2230	1896	246

CODE	L	L1	L2	L3	L4	L5	L6	L7	W	W1	W2	W3	W4	H	H1	H2
GT - FPF 3.5	5206	4372	3812	4260	280	1400	1677	685	3124	2564	490	280	800 - 1100	2180	1760	170
GT - FPF 4.5	6288	5303	4703	5190	300	1400	1700	1065	3342	2860	490	300	800 - 1100	2230	1846	196
GT - FPF 5.5	6288	5303	4703	5190	300	1400	1700	1065	3342	2860	490	300	800 - 1100	2230	1846	196



GT - FPA-LT 5.0



4 column electrohydraulic lift with lift table, ideal for 3D technology wheel alignment - 2 independent ropes - pneumatic safety release - anti knock valve - Lift table capacity 3500kg - engine power 2.2 KW - 400V/3PH/50HZ on request 220V/1PH
Pneumatic connection for safety release required 6/8 bar

Sollevatore elettroidraulico 4 colonne con torretta ideale per assetto ruote a tecnologia 3D - 2 funi indipendenti - sgancio sicuro pneumatico - valvola paracadute - Lift table portata 3500kg - potenza motore 2.2 KW - 400V/3PH/50HZ a richiesta 220V/1PH - Richiesta connessione pneumatica 6/8 bar.

MODEL	PLATFORM (mm)	CAPACITY PLATFORM	CAPACITY LIFT TABLE	DISTANCE BETWEEN COLUMN	LIFTING HEIGHT	DESCRIPTION
GT- FPA - LT	5190 X 640	5000 Kg	3500 Kg	2860	250 - 1890	Front recess 1025mm - lift table 1450x2160mm - rear recess 1912mm - anti knock valve - engine power 2.2kw - 400V/3PH Incavo anteriore 1025 mm - lift table 1450x2160mm - incavo posteriore 1912mm - valvola paracadute - potenza motore 2.2kw - 400V/3PH /50Hz

OPTIONAL

• Emergency Manual Descent Pump
Pompa di emergenza manuale

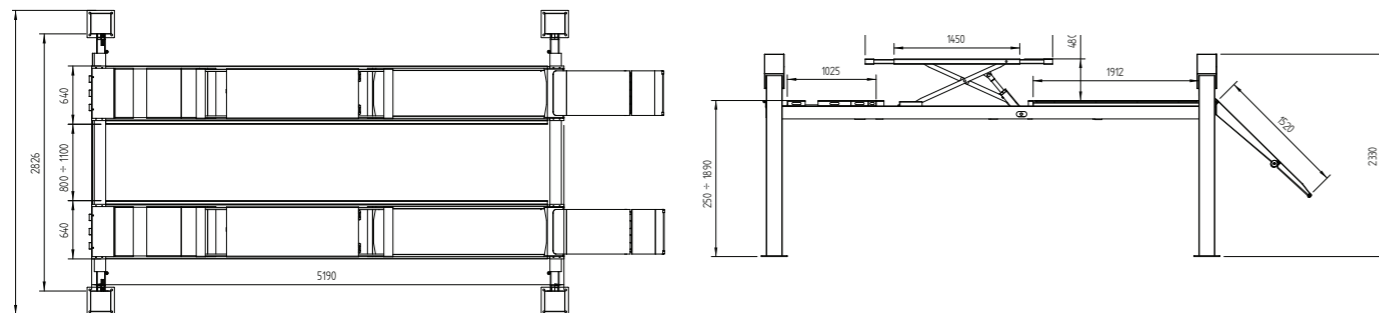
• LED lamp kit
Kit lampade a LED

• Expansion bolt set (16pcs)
Tasselli ad espansione (16 pcs)

• Rolling jack 2T manual
Rolling jack 2T manuale

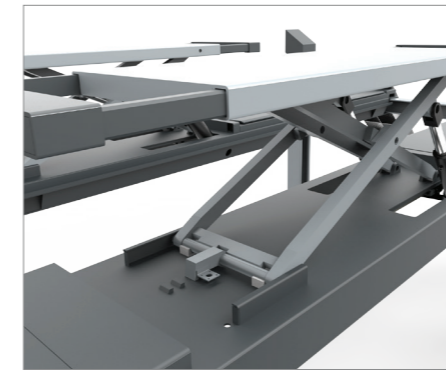
• Rolling jack 2T pneumatic
Rolling jack 2T pneumatico

• Rolling jack 3T pneumatic
Rolling jack 3T pneumatico



All our products are supplied with sandblasting.
STANDARD COLOURS: GREY RAL 7016 - GREY RAL 7040

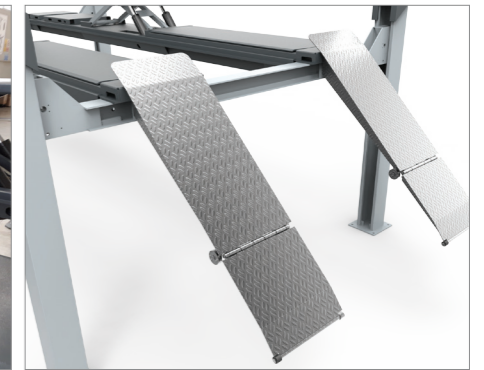
Su tutti i ponti viene applicato il trattamento di sabbiatura.
COLORI STANDARD: GRIGIO RAL 7016 - GRIGIO RAL 7040



LIFT TABLE WITH PNEUMATIC RELEASE
LIFT TABLE CON SGANCIO PNEUMATICO



LIFT TABLE WITH DOUBLE EXTENSION
LIFT TABLE CON DOPPIA ESTENSIONE



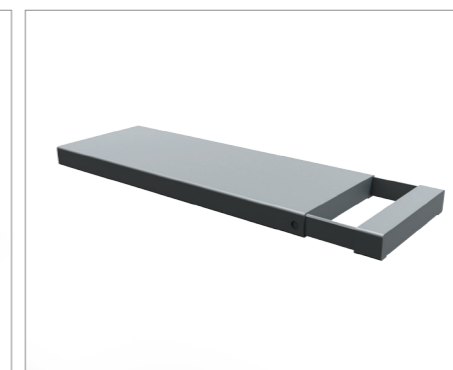
DOUBLE APPROACHING RAMPS
RAMPE SALITA DOPPIE



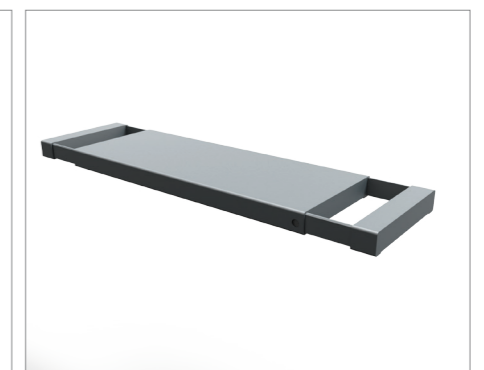
5.000 Kg



ROLLING JACK 2T/3T
ROLLING JACK 2T/3T



LIFT TABLE WITH 1 EXTENSION
LIFT TABLE CON 1 ESTENSIONE



LIFT TABLE WITH 2 EXTENSIONS
LIFT TABLE CON 2 ESTENSIONI



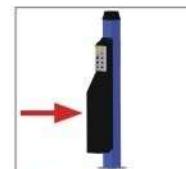
GT-FPA3.5
GT-FPA4.5
GT-FPA5.5



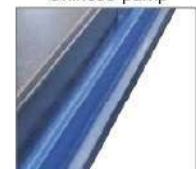
Italian pump



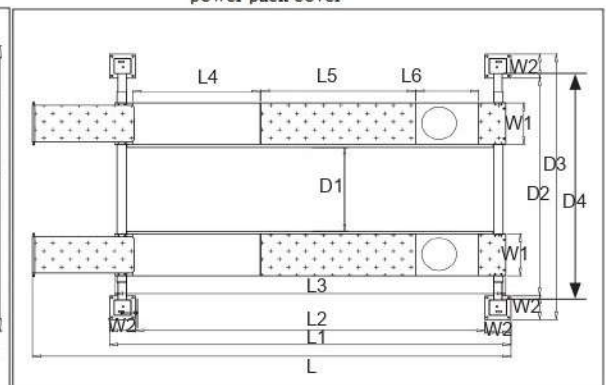
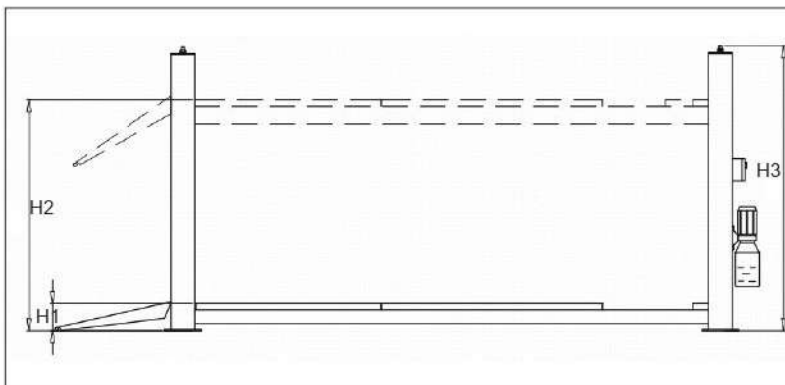
Chinese pump



Optional: complete power pack cover



With guide rail



Item	L	L1	L2	L3	L4	L5	L6	H1	H2	H3	W1	W2	D1	D2	D3	D4
GT-FPA3.5	5540	4372	3812	4260	1400	1677	685	220	1820	2180	490	280	800-1100	2564	3124	2668
GT-FPA4.5	6759	5262	4662	5190	1400	1677	1065	246	1896	2230	490	300	800-1100	2746	3346	2868
GT-FPA5.5	6759	5262	4662	5190	1400	1677	1065	255	1845	2230	490	300	800-1100	2746	3346	2868

Features:

- 1 24V low voltage control.
- 2 With mechanical lock and pneumatic release which needs air supply in 6~8bar.
- 3 With parachute valve and safety valve.
- 4 With guide rail as standard, customer can choose the available optional rolling jack in 2.0T/3.0T
- 5 Easy for tyre mount and dismount and chassis maintenance.
- 6 The alignment level of the lift can be adjusted in high precision;
- 7 Position of turntable can be adjusted to suit for various types of vehicles.





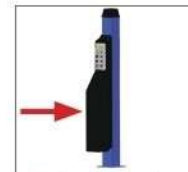
GT-FPF3.5
GT-FPF4.5
GT-FPF5.5



Italian pump



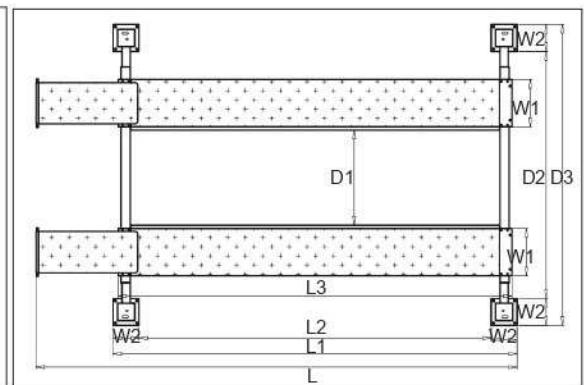
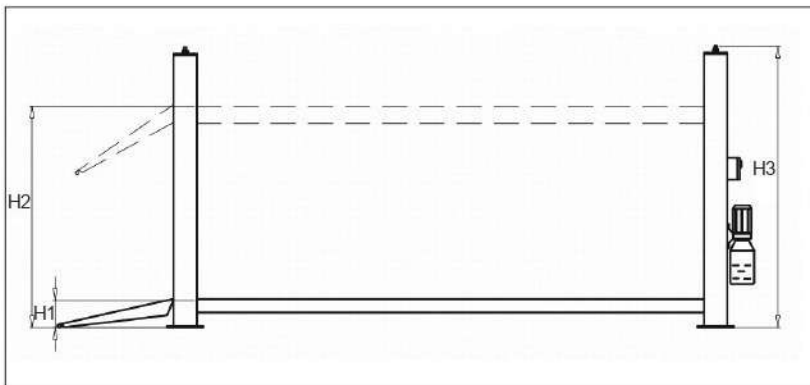
Chinese pump



Optional complete power pack cover



With guide rail



Item	L	L1	L2	L3	H1	H2	H3	W1	W2	D1	D2	D3
GT-FPF3.5	5540	4372	3812	4260	170	1770	2180	490	280	800-1100	2564	3124
GT-FPF4.5	6776	5303	4703	5190	196	1846	2230	490	300	800-1100	2742	3342
GT-FPF5.5	6776	5303	4703	5190	196	1846	2230	490	300	800-1100	2742	3342

Features:

- 1 24V low voltage control.
- 2 With mechanical lock and pneumatic release which needs air supply in 6-8bar.
- 3 With parachute valve and safety valve.
- 4 With guide rail as standard, customer can choose the available optional rolling jack in 2.0T/3.0T
- 5 Easy for tyre mount and dismount and chassis maintenance.





GALTA

Vat. n° 04058700248

Via Vittorio Lombardi 19/21 - 36075 Montecchio Maggiore (VI) Italy

Phone : +39 0444 493977 - Fax: +39 0444 495999

www.galta.it - info@galta.it

